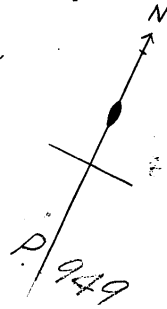


949

F. N. S. BOOK 31

COUNTY OF BUCKINGHAM  
PARISH OF GLENORCHY

Scale 60 Feet to one inch



Part of 32 20 Gt. to Richd. Cleburne.

(P. 1902)  
(560/50)

65 ac Gt. to John Rodman & Jane Rodman

(P. 1584)  
(P. 1558)

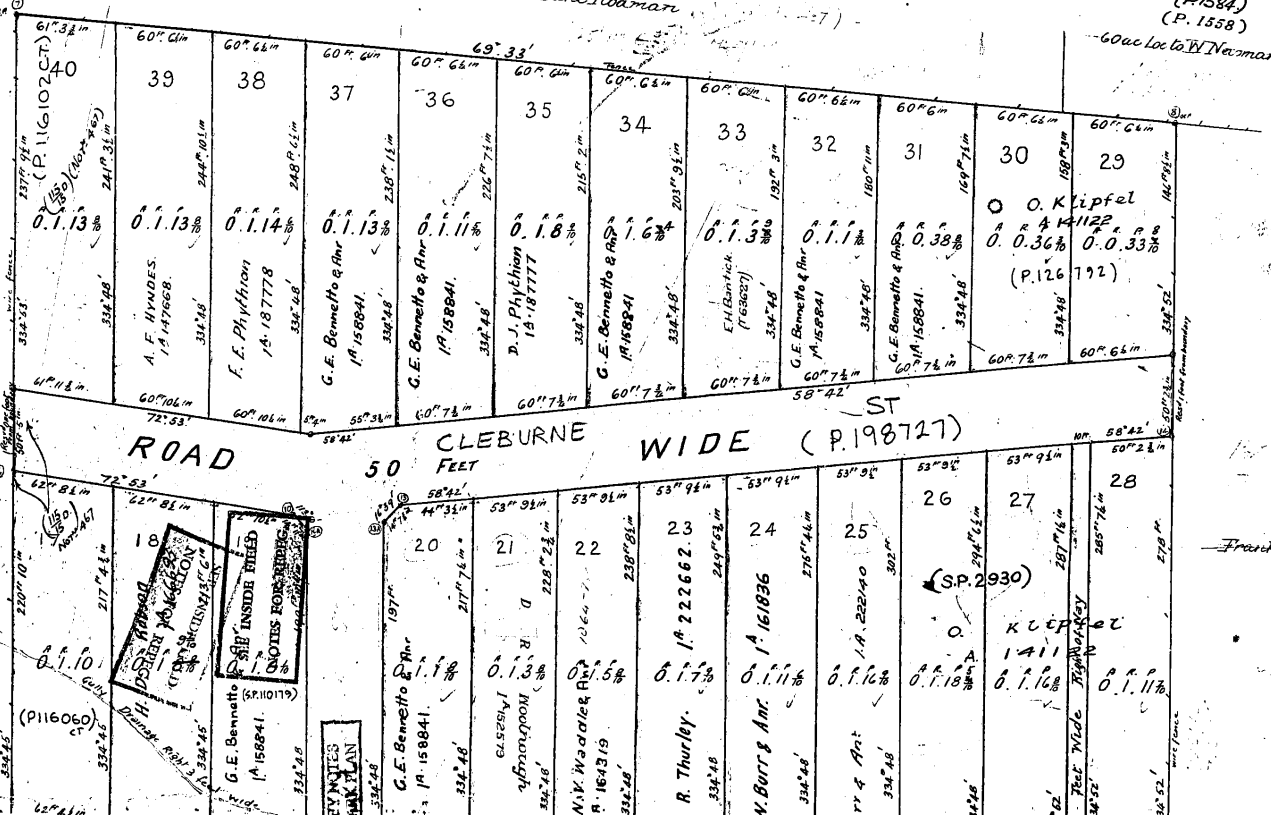
(P. 1584)  
(P. 1558)

(P. 1891)

(525/120)

(P. 1897)

(P. 116060)



Rupert Henry Stanfield

CCCN 14

REGISTERED NUMBER  
**54788**

Declared before me  
*Neil Irwin*

This 17<sup>th</sup> day of January 1912  
*George R. Abbott*  
Justice of the Peace

*Edith Leonard*  
and *Samson*

Survey completed 17.1.12.  
Error of angle see case.  
Examined by M.S.C. 24.  
Filed on Card 1444.

Damage Reserve Plan 2 June 1912  
Exhibit A

I Edith Leonard, Clerk of the Peace, do solemnly and sincerely declare that this plan has been made and is a true and correct copy of the original plan as shown to me by the parties thereto, and that I have not made any alteration or addition thereto, and that I have not made any omission therefrom, and that I have not made any error or mistake in the same, and that I have not made any alteration or addition thereto, and that I have not made any omission therefrom, and that I have not made any error or mistake in the same.

949

F.N.S. BOOK 31

